

# clever



## 20 St. Judes Road

, Plymouth, PL4 9HT

**£550 Per month**



FULLY FURNISHED BILLS INCLUSIVE 6 BEDROOM HOUSE WITH ON STREET PARKING

PERFECT FOR A COMPANY LET OR A GROUP OF 6 SHARING.

DOUBLE ROOMS AVAILABLE NOW

Welcome to this stunning 6-bedroom house located on St Judes Road in Plymouth! .

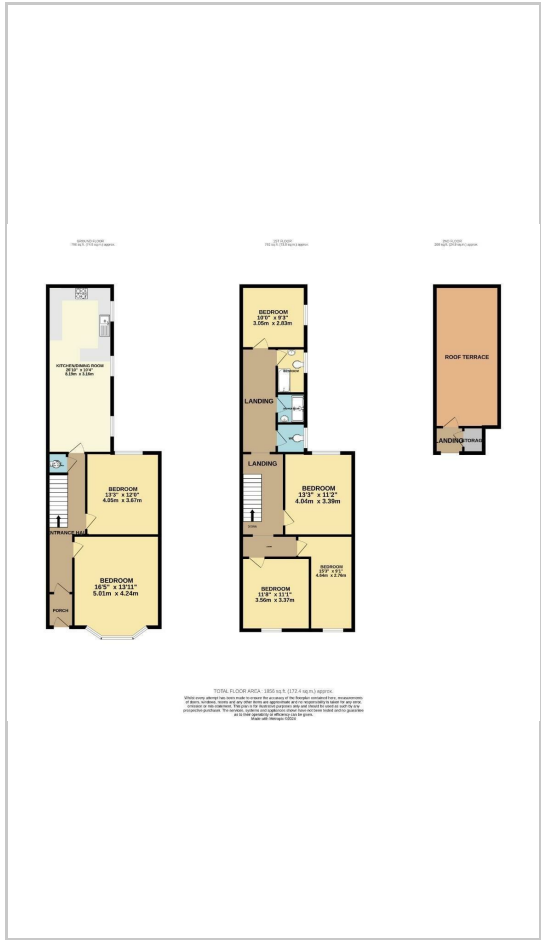
Boasting a large open plan lounge/ kitchen where you can relax and entertain guests with ample space for cooking up delicious meals and enjoying them with family and friends.



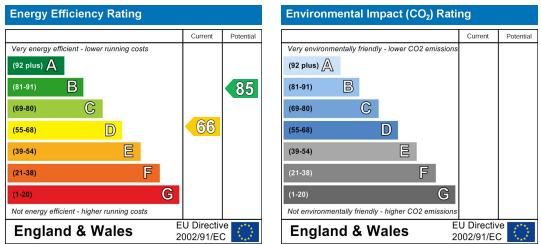
# Area Map



# Floor Plans



# Energy Efficiency Graph



These particulars, whilst believed to be accurate are set out as a general outline only for guidance and do not constitute any part of an offer or contract. Intending purchasers should not rely on them as statements of representation of fact, but must satisfy themselves by inspection or otherwise as to their accuracy. No person in this firm's employment has the authority to make or give any representation or warranty in respect of the property.

Queen Anne Terrace, 2 Plymouth, Devon, PL4 8EG  
 Tel: 01752500511 Email: hello@stayclever.co.uk <https://www.stayclever.co.uk>